


RED SHIELD 8 NATIONS INC.

Montana Tribal Regional Healing Center Planning Update

October 2025 Update

HOW IT ALL BEGAN

- Discussions began 10+ years ago with tribal leaders and health directors about the need for a in-state Native culturally-relevant residential healing/treatment center
 - American Indian Health Leaders took the lead with support from Tribal Councils
 - All MT tribes submitted a resolution with the commitment to participate in a planning process
 - After a review of different models of development, it was determined to create a nonprofit organization
- 

RED SHIELD 8 NATIONS INC. (RS8N)

- RS8N was founded in 2024 and incorporated as a 501(c)3 nonprofit organization; Montana tribes signed resolutions in support and designated a Board of Director
- Goal: to develop a 32-bed Regional Healing/Treatment Center (RHC) in Great Falls (land donated by the Little Shell Tribe)
- Provide ASAM Level 3.5 and 3.7 residential care for adult American Indians in Montana with a Substance Use Disorder (SUD)



RS8N Board of Directors

- Operated by a 9-member Board of Directors
 - Eight seats for all Montana Tribes, delegated by Tribal Council
 - One seat representing Urban Indian Centers delegated by MCUIH members
 - Primary Board Member and Alternate delegated
- Board of Directors meet monthly
 - Quarterly face to face meetings
 - Virtual Zoom meetings in the other months



Strategic and Action Plan

Five Year RHC Project Overview

	2022				2023				2024				2025				2026				2027			
	Q4	Q1	Q2	Q3	Q4	Q1	Q2	Q3	Q4	Q1	Q2	Q3	Q4	Q1	Q2	Q3	Q4	Q1	Q2	Q3	Q4			
Strengths & Needs Assessment	1	2	3		4	5	6																	
Planning		1		2	3	4	5	6	7															
Design & Engineering						1	2	3	4	5	6	7												
Pre-Operations Implementation									1	2				3		4	5	6	7					
Pre-Construction Development											1	2	3											
Construction														1						2				
Service Launch													1									2	3	



Efforts to Date

- Strengths, Needs and Feasibility Study; Governance, Ownership, and Management Model; Service and Staffing Model
- Operations and Business Plan
- Facility Schematic Design
- Total Estimated Cost to Build: \$22,701,120
- Anticipated open date: Q4 2027
- Continued response to policy questions and issues that would impact treatment center success including Medicaid rate setting, Rural Health Transformation Program and other initiative efforts
- First ED hired August 4, 2025


and Needs Assessment – what the data says

ted:
00 adult AIs annually need detoxification and/or medically managed
ces. More than 400 in need of high intensity residential services.
reatest need for the highest level of residential care (ASAM Levels 3.5&3.7).
significant disparities in substance use and mental health issues, complicated
and indigenous determinants of health.

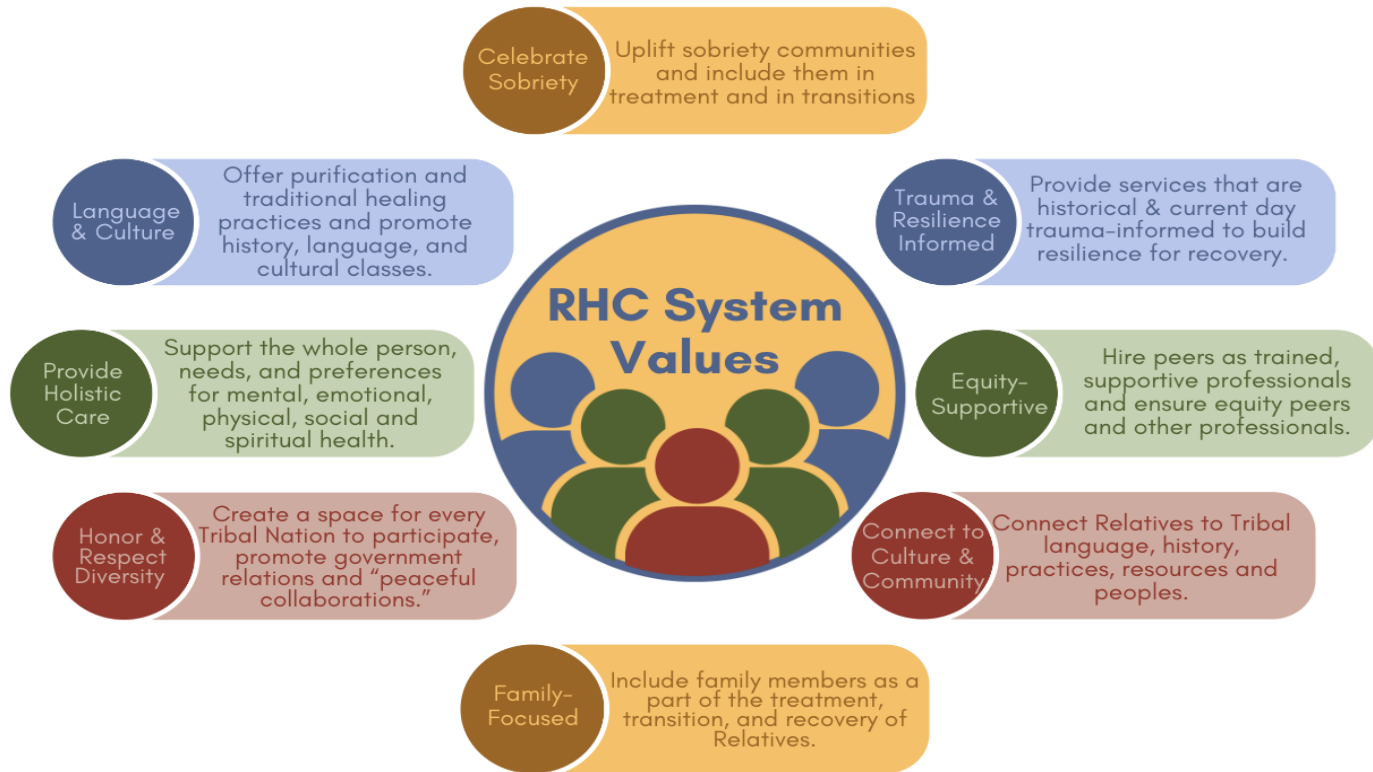


Strengths and Needs Assessment – what the data says

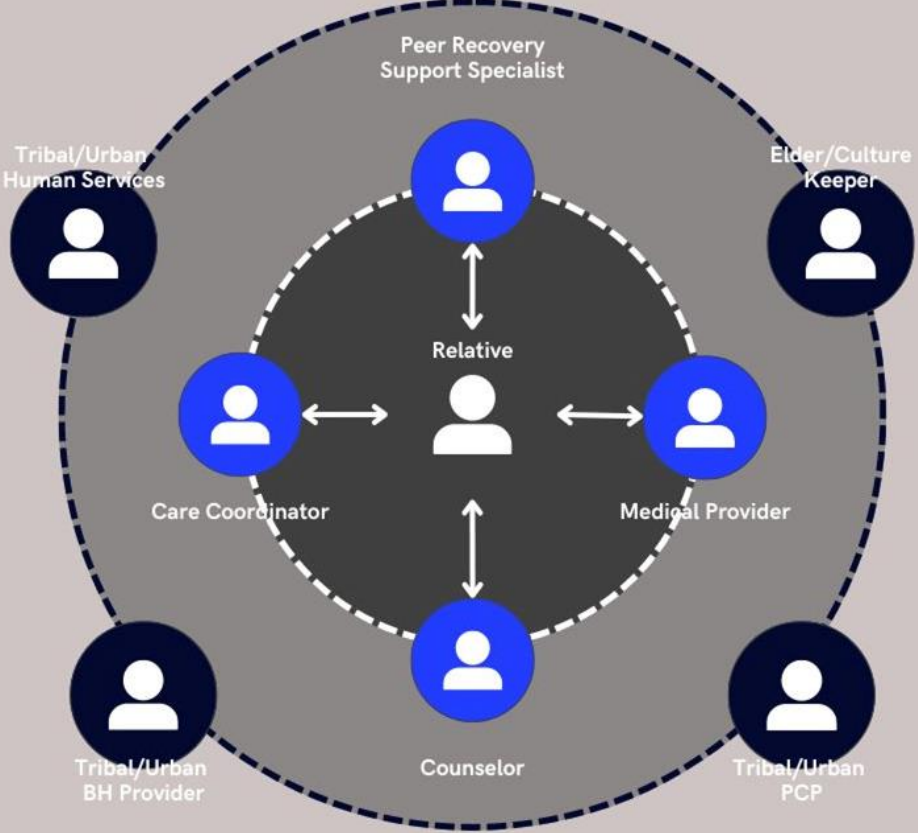
Assessment documented:

- Approximately 200 adult AIs annually need detoxification and/or medically managed withdrawal services. More than 400 in need of high intensity residential services.
 - Tribes have the greatest need for the highest level of residential care (ASAM Levels 3.5&3.7).
 - AI suffer from significant disparities in substance use and mental health issues, complicated by poor social and indigenous determinants of health.
 - Culture and language is key to recovery, as is building a strong sobriety community.
 - Data demonstrates that a 32 bed adult facility would be viable economically and that the need is greater.
 - The RHC has the potential for more expansion in the future serving other targeted populations such as youth services
- 


RHC System Values



Key Feature: Care Coordination Team



Treatment Services

- Cultural Treatment
 - Sweat Lodge Ceremony, Medicine
 - Pipe Ceremony
 - Purification Using Herbal Medicines
 - Talking Circle
 - Drum Circle
 - Equine horse therapy
 - Conventional Milieu Treatment
 - Support
 - Structure
 - Validation
 - Involvement
 - Containment
 - Alternative Therapies: yoga, meditation, and acupuncture
- 

Estimated Capital Costs	
Regional Healing Center	
<i>Based on 32 Bed Facility (20,400 Square Foot)*</i>	
<i>Expenses</i>	
Land Acquisition Expenses ⁺	\$850,000
Architecture & Design Costs (6.25% of construction costs)	\$765,000
Engineering (6.25% of Hard Costs)	\$765,000
Surveys, Regulatory Costs, Other Soft Costs (5% of construction costs)	\$612,000
Site Preparation (10% estimate or construction costs)	\$1,224,000
Construction Direct Costs (\$600/sq ft)	\$12,240,000
FFE (10% of construction costs)	\$1,224,000
Finance Costs (7% of construction costs)	\$1,237,600
Contingency Funds (20% of total costs)	\$3,783,520
Total Estimated Capital Costs	\$22,701,120

Financing Plan

- Total Estimated Cost to Build: \$22,701,120
- Diverse Capital Stack:
 - Federal funds - \$3,545,000 from Community Development Fund (in progress)
 - Tribal contributions
 - Local and National Foundations
 - Individual Donations
 - Financing
 - New Market Tax Credits
 - BIA Loan Guarantee Program
 - Traditional Bank Financing
 - Other



5 Year Summary Projection

Assumes Calendar Year Operations

	2025	2026	2027	2028	2029
<i>Revenue</i>	PI Period	PI Period	Service Launch	Service Delivery	Service Delivery
IHS Recurring		\$0	\$780,765	\$1,639,607	\$1,664,201
IHS Non-Recurring		\$0	\$2,555,989	\$2,894,315	\$1,978,942
Program Income (NR)		\$0	\$1,947,640	\$7,011,504	\$8,608,569
Grants		\$0	\$0	\$0	\$0
Business Loan		\$2,248,402	\$0	\$0	\$0
<i>Total Revenue</i>	<i>\$1,093,000</i>	<i>\$2,248,402</i>	<i>\$5,284,394</i>	<i>\$11,545,425</i>	<i>\$12,251,711</i>
<i>Expenses</i>					
Personnel	\$245,842	\$375,858	\$3,051,338	\$4,138,969	\$4,479,232
Fringe	\$73,753	\$112,757	\$576,295	\$885,743	\$954,341
Other Operating Expenses	\$372,042	\$959,660	\$2,248,402	\$3,053,981	\$2,679,115
<i>Total Expenses</i>	<i>\$691,637</i>	<i>\$1,448,276</i>	<i>\$5,876,035</i>	<i>\$8,078,694</i>	<i>\$8,112,688</i>

Montana Regional Healing Center Site

Land Survey in
process
contracted with
Ries and
Associates



Regional Healing Center

SITE INFORMATION:

- Cascade County
- Fee Land
- Total LST Size: 295.46 acres
- 15 Acres donated to RHC
- Farmland, Slight Rolling Plains
- Suitable for Construction

INFRASTRUCTURE:

- All utilities available
- Access to net metering
- Near Interstate, City/County Roads Access



Regional Healing Center

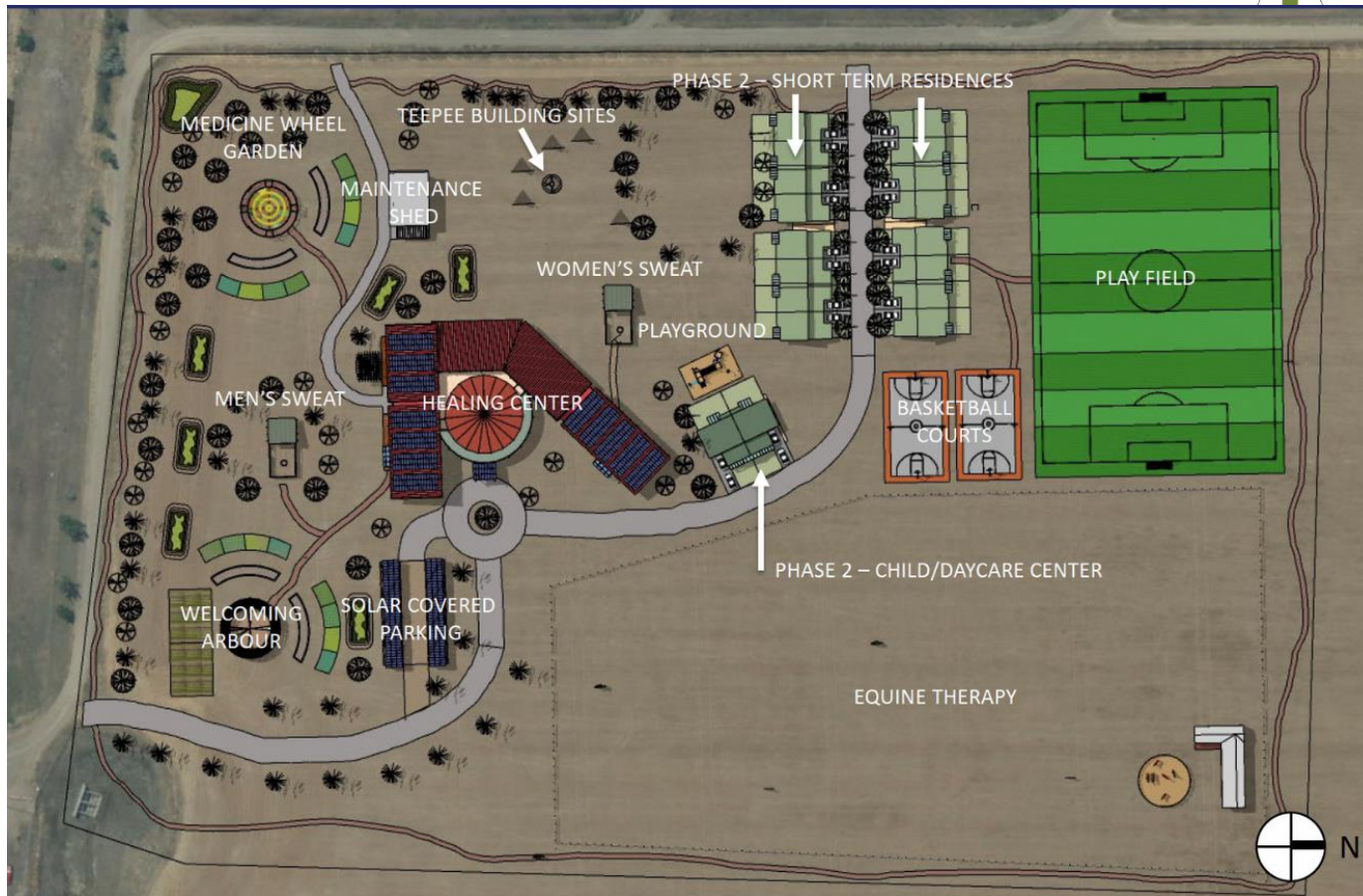


HEALING BENEFITS:

- Suburban, Large Site
- Slight Rolling Farmland
- View of Distant Mountains, Prairie, and Town
- Large Site Accommodates Site Cultural Programs
- Optimal for Equine Therapy



RHC Master Site Plan




RHC Main Entrance

Looking Southwest



NEXT STEPS FOR RS8N

- Develop website and marketing collateral (RFP)
 - Develop and implement a comprehensive capital stack that includes a capital fund development campaign (RFP)
 - Tribal Council visits for updates (in progress)
 - Complete land survey (contracted and in progress)
 - Contract with services for pre/development and development
 - Develop systems for nonprofit governance and operation
 - Board support documents
 - Annual operating budget
 - Tracking and reporting system
 - Infrastructure policies including operational, personnel policies and benefit packages
 - Tax, legal, grant and audit processes
 - Develop a staffing structure, recruiting, screening, hiring, onboarding plans
 - Establish technology systems for file management
- 

Contact Information

Red Shield 8 Nations Inc.

Patricia (Patti) Hibbeler

Executive Director

Patricia.Hibbeler@RS8N.org

406.501.3699

